



GLOBAL STEEL STRUCTURES PVT. LTD.

(FORMERLY - GLOBAL STEEL COMPANY)

RDSO(PART-A) APPROVED COMPANY



RDSO

Research Design & Standards Organisation

Manufacturer of Composite / Bow String / Open Web Steel Girders and PEB

A Group Company of BEKEM



ABOUT US:

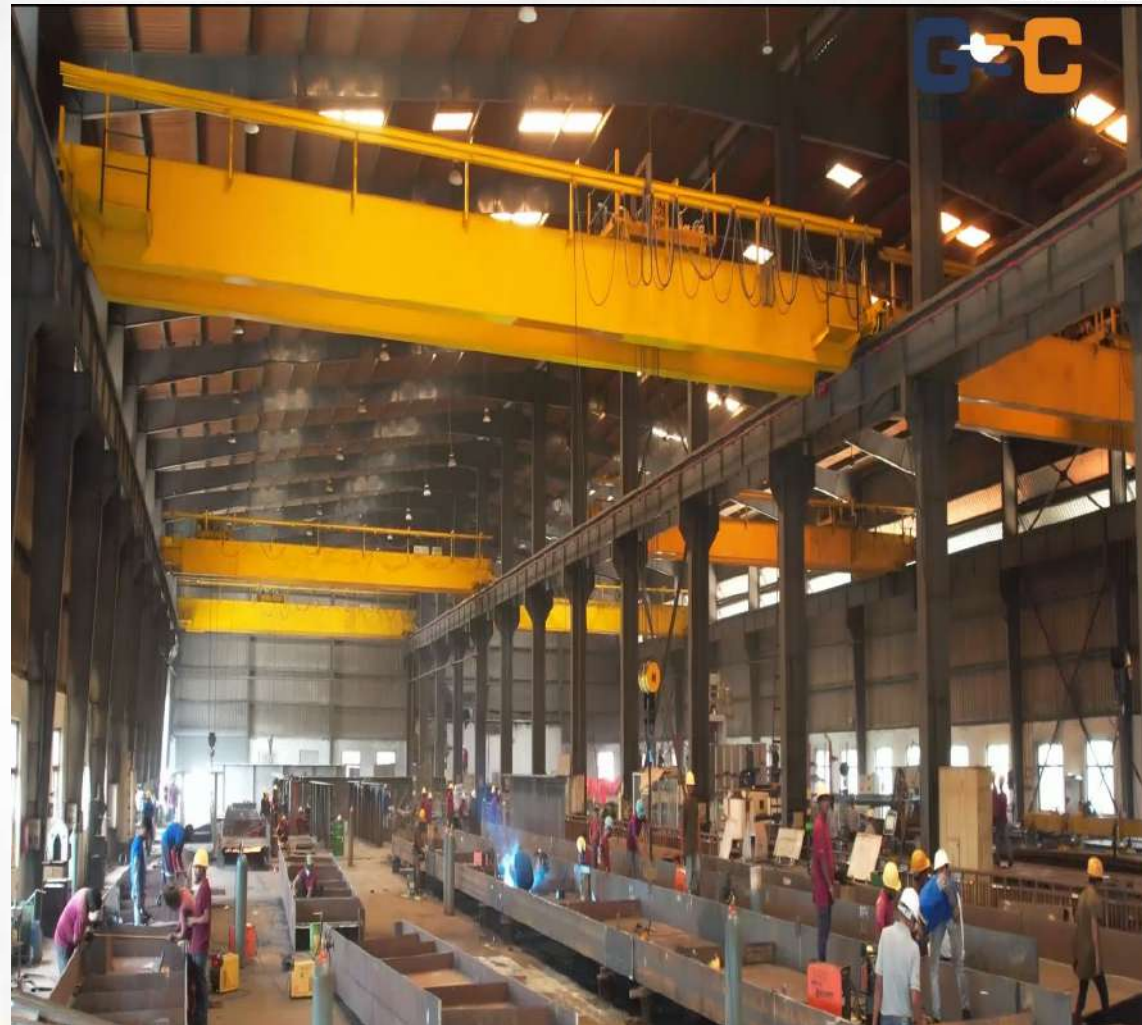
Global Steel Structures Pvt. Ltd. (GSSPL) (Formerly - Global Steel Company) was founded with the dream of revolutionizing the steel industry in India today. Lakhs of metric tons on and with countless customers served. From stand-alone warehouses to complex architectural multi-storey steel buildings and road-over bridges, our pre-engineered structures dot the landscape of this nation and stand as a testament to our expertise.

VISION:

To be the world's most trusted and reliable steel company. Offer service levels that are the benchmark of the industry.

MISSION:

To provide end to end building solutions by leveraging our vast network of resources. Surpass customer expectations using innovation, design, versatility, technology, expertise and cost-effective practices.

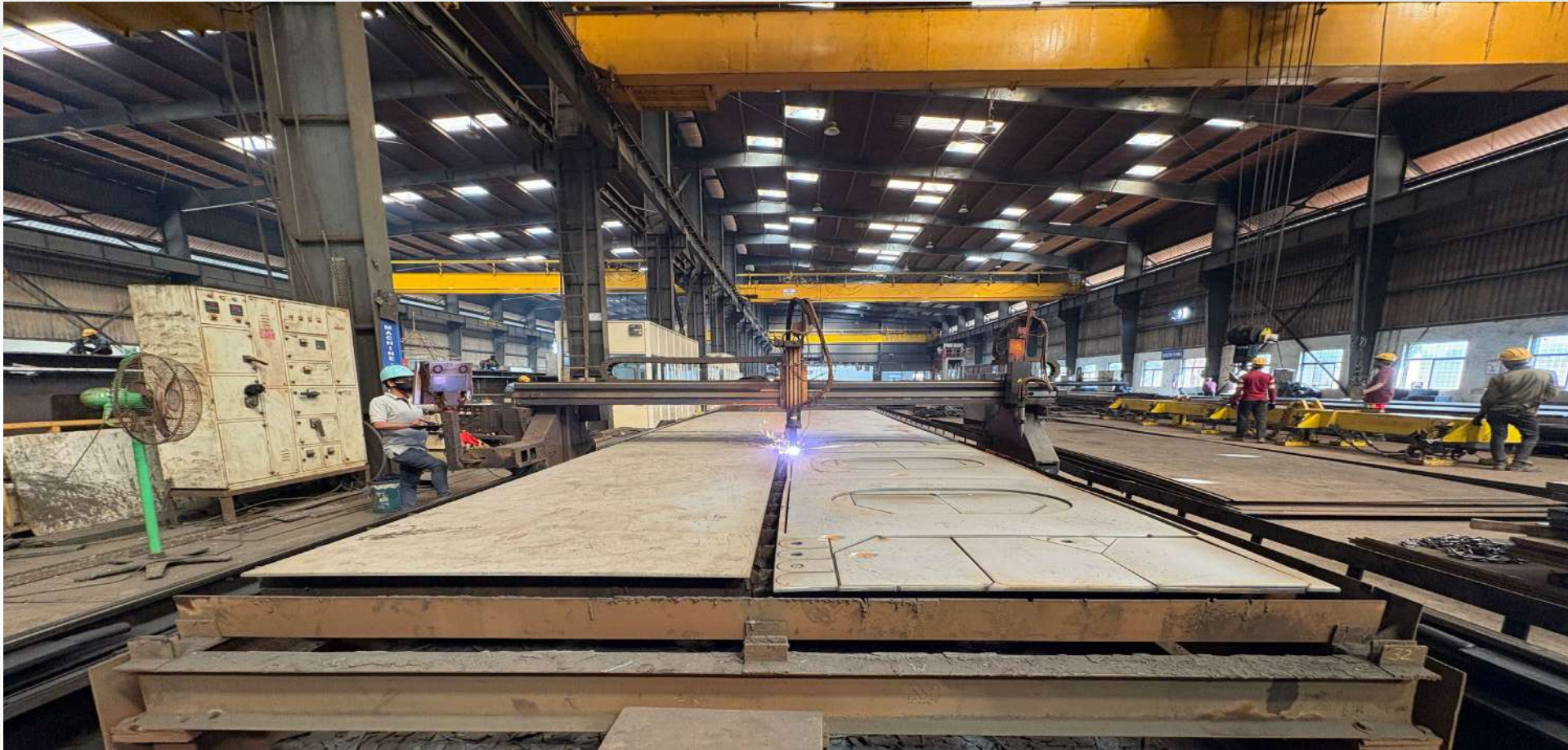


MANUFACTURING UNIT:

GSSPL has a complete CNC automation manufacturing unit in Medchal, Hyderabad.

The plant is fully equipped with the latest machinery such as:

- ✓ 6 EOT Cranes in 2 bays (20 Ton Capacity)
- ✓ 5 Goliath Cranes for Assembly & Dispatch
- ✓ 2 bays 22m x 170 m each under 28m height goliath crane for check assembly
- ✓ Beam Welding Machine (Tandem Tech)
- ✓ CNC Drilling Machine – 2 Nos
- ✓ CNC Plasma cutting Machines – 2 Nos
- ✓ Semi-Automatic Grit Blasting Machine
- ✓ Metalizing Facility
- ✓ Painting Facilities – 3 Places



CNC PLASMA CUTTING MACHINES

A Group Company of BEKEM



CNC DRILLING MACHINES

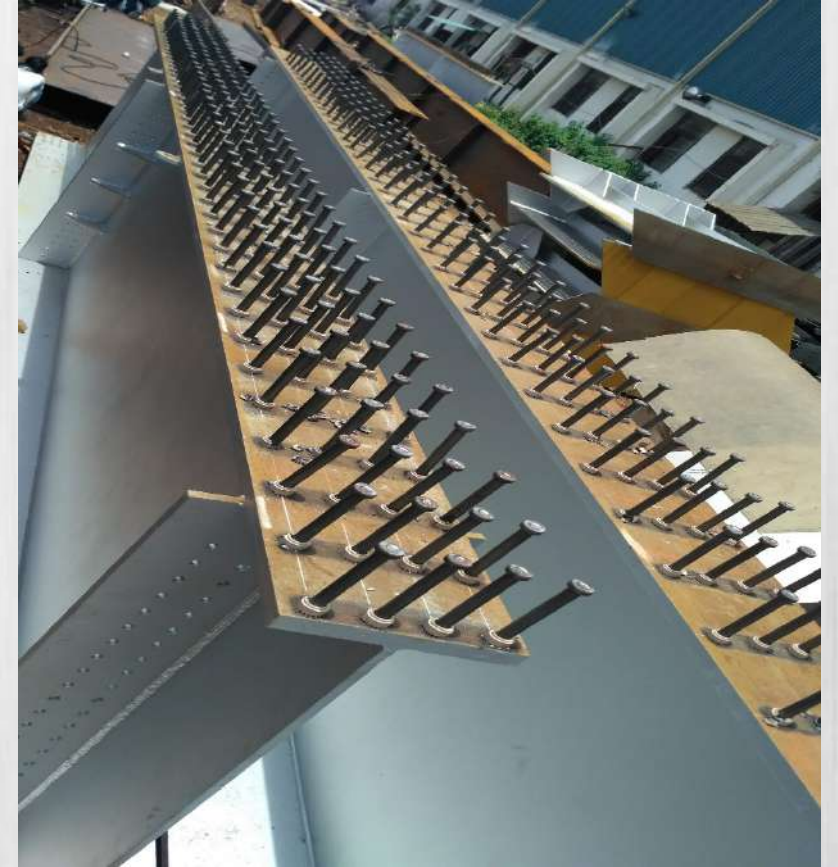
A Group Company of BEKEM

**BEAM WELDING MACHINE WITH TANDEM TECH.
IMPORTED FROM ITALY**

- I, Star & Box Beams
- Web height up to 2500 mm
- Flange width up to 1200 mm
- Beam length up to 12500 mm
- Web Thickness up to 40 mm
- Flange thickness up to 80 mm
- Hydraulic Clamping and web plate alignment system.
- In-built hydraulic Straightening rollers of Girders



A Group Company of BEKEM



STUD WELDING



BLASTING BOOTH



STEEL GRITS



PAINTING

SHOT BLASTING & PAINTING



TRIAL ASSEMBLY OF 30.0M SPAN ROB



TRIAL ASSEMBLY 18.0M SPAN ROB

A Group Company of BEKEM



40.0M SPAN OPEN WEB GIRDER – BRIDGE NO-EAK213 - KERALA

A Group Company of BEKEM



76.60M SPAN OPEN WEB GIRDER – PATRIPOOL KALYAN - MSRDC

A Group Company of BEKEM



79.0M SPAN OPEN WEB GIRDER – PUNE METRO - NCC

A Group Company of BEKEM



33.0M SPAN SEMI THROUGH GIRDER – PATRIPOOL KALYAN - MSRDC

A Group Company of BEKEM



ONE SIDE ARCH OF 54.0M SPAN BOW STRING GIRDER – RAIGNAJ – DRAIPL

A Group Company of BEKEM



ONE SIDE ARCH OF 72.0M SPAN BOW STRING GIRDER – NAGPUR - MRIDC



90M CONTINUOUS SPAN CURVE GIRDER – PARNAKUTI CHOWK - PUNE METRO

A Group Company of BEKEM



CURVED 2-SPAN CONTINUOUS (PP45-PP46-P47) – SCLR-MUMBAI METRO

A Group Company of BEKEM

ROAD OVER BRIDGES – COMPOSITE STEEL GIRDERS

The rapid rate of road and railway development in recent years has resulted in a massive necessity for Road Over Bridges (ROB) and Road Under Bridges (RUB). However these structures would deter traffic on road or rail if conventional methods of construction are used. Steel girders save an enormous amount of time, effort and resources.

GSSPL offers state of art manufacturing facility for fabrication of composite Girder, Bow String Girders and Open Web Girders from primary producers of steel (SAIL/JINDAL) plates . Available in a variety of grades, these MS materials are known for their rust resistance and long-lasting features. These grades and materials are customized based on our client's requirements in our world class facility.

GSSPL specializes in the fabrication and erection of Composite Steel Girders for ROB and RUB as per specifications set by the Indian Railways. The various sectors of the Indian Railways are now coming together to make way for a more effective structure. The new structure would standardize span arrangement and design for steel composite girders to reduce time and effort.

Advantages:

- RDSO approved fabrication unit
- Fabrication being done in workshop in controlled climatic condition
- Higher productivity due to automation in drilling and cutting for faster deliveries
- Precision saw welding by automatic Beam Welding Machine
- Automatic warpage control in Beam Welding Machine and Hydraulic Cylinders.
- Centrally located unit to cater Pan India clients

Major Projects Executed

YEAR – 2012			
CLIENT	LOCATION	SPAN	QTY (MT)
SOUTH CENTRAL RAILWAYS	PERICHERLA, GUNTUR DIST.	37.0 M	150
SOUTH CENTRAL RAILWAYS	PERICHERLA, GUNTUR DIST.	44.9 M	254
SOUTH CENTRAL RAILWAYS	LINGAMPALLY HYDERABAD.	30.0 M	140
SOUTH CENTRAL RAILWAYS	MAHABOOB NAGAR.	26.1 M	130
SOUTH CENTRAL RAILWAYS	BONAKALU, KHAMMAM DIST.	28.7 M	140
SOUTH CENTRAL RAILWAYS	ERRUPALEM, KHAMMAM DIST.	28.1 M	118
SOUTH CENTRAL RAILWAYS	MADHIRA, KHAMMAM DIST.	30.4 M	260
SOUTH CENTRAL RAILWAYS	PALAKOLLU, WEST GODAVARI DIST.	34.8 M	140
SOUTH CENTRAL RAILWAYS	BELLAMPALLI, ADHILABAD.	34.8 M	145
	TOTAL		1477



Major Projects Executed

YEAR - 2013			
CLIENT	LOCATION	SPAN	QTY (MT)
SOUTH CENTRAL RAILWAYS	MADHIRA, KHAMMAM	30.4 M	260
SOUTH CENTRAL RAILWAYS	TUNI, EAST GODHAVARI	35.6 M	155
SOUTH CENTRAL RAILWAYS	RAICHUR, KARNATAKA.	29.0 M	103
SOUTH CENTRAL RAILWAYS	BHONGIRI, NALGONDA DIST.	35.0 M	180
SOUTH CENTRAL RAILWAYS	RENIGUNTA, TIRUPATI.	35.2 M	292
SOUTH CENTRAL RAILWAYS	RENIGUNTA, TIRUPATI.	30.5 M	1120
SOUTH CENTRAL RAILWAYS	KADAPA.	30.5 M	90
SOUTH CENTRAL RAILWAYS	JAMMIGUNTA, KHAMMAM DIST.	30.2 M	140
SOUTH CENTRAL RAILWAYS	BALHARSHA, MAHARASTRA.	33.6 M	138
SOUTH CENTRAL RAILWAYS	SIRPUR KAGAZ NAGAR, KARIMNAGAR DIST.	42.1 M	250
SOUTH CENTRAL RAILWAYS	PONDURU, SRIKAKULAM DIST.	36.0 M	175
SOUTHERN RAILWAYS	CHENGURLA , KERALA	30.0 M	105
		TOTAL	3008

Major Projects Executed

YEAR - 2014			
CLIENT	LOCATION	SPAN	QTY (MT)
SOUTHERN RAILWAYS	TIRUVALLUR, KERALA	30.0 M	105
NORTH EASTERN RAILWAYS	ROB AT LC NO 178 SPECIAL UTTAR PRADESH	30.0 M	1100
NORTH EASTERN RAILWAYS	ROB UTTAR PRADESH	30.0 M	65
NORTH EASTERN RAILWAYS	ROB AT LC NO 139 A IN UTTAR PRADESH	30.0 M	600
		TOTAL	1870
YEAR - 2015			
SOUTH CENTRAL RAILWAYS	RENIGUNTA, TIRUPATI	18.0 M	138
SOUTH CENTRAL RAILWAYS	RENIGUNTA, TIRUPATI	36.0 M	312
SOUTHERN RAILWAYS	MAILAM, TAMIL NADU	42.8 M	260
SOUTHERN RAILWAYS	ATTIPATTU ROB AT LC NO 13 TAMIL NADU	28.3 M	205
SOUTHERN RAILWAYS	VEPPAMPATTU, ROB AT LC NO 13, LC 26 & LC 78 TAMILNADU.	37.18M, 38.0M, 32.0M	625
SOUTHERN RAILWAYS	VINAYAMBADI ROB AT LC NO 80, TAMILNADU	37.16 M	205
SOUTHERN RAILWAYS	OLAKUR, ROB AT LC NO 88 TAMILNADU	46.7 M	350
		TOTAL	2095

Major Projects Executed

YEAR - 2016			
CLIENT	LOCATION	SPAN	QTY (MT)
SOUTH CENTRAL RAILWAYS	VIZAYANAGARAM	36.0 M	204
SOUTHERN RAILWAYS	VIKARAMANDI AT LC NO 111 TAMILNADU	41.24 M	272
SOUTHERN RAILWAYS	PUTULUR, ROB AT LC NO 16 IN TAMILNADU	30.75 M	108
SOUTHERN RAILWAYS	LC-75, TAMILNADU	46.6 M	350
SOUTHERN RAILWAYS	ROB AT LC 37 AND LC 59, TAMILNADU	36.0M, 24.0M	750
		TOTAL	1684
YEAR - 2017			
SOUTHERN RAILWAYS	LC 67 AND LC 70 AND LC 72 NEAR CHENNAI	36.0 M	685
SOUTHERN RAILWAYS	LC-26, TAMILNADU	32.0 M	202
CENTRAL RAILWAY	PANVEL JNPT NHAI PROJECT , PANVEL MUMBAI	64.0M, 61.9M	850
		TOTAL	1737

Major Projects Executed

YEAR - 2018			
CLIENT	LOCATION	SPAN	QTY (MT)
SOUTH CENTRAL RAILWAYS	RVNL –BHIMAVARAM PROJECT	18.3 M	340
SOUTH CENTRAL RAILWAYS	YERRAGUNTLA, KARNOOL	36.7 M	400
SOUTHERN RAILWAYS	BRIDGE NO EAK 213 HARIPAD KERALA.	40.0 M	140
CENTRAL RAILWAY	PANVEL MUMBAI	51.0M, 35.0 M	1000
CENTRAL RAILWAY	PAGOTE, MUMBAI.	13.2M, 15.2M 23.0M, 25.0M	650
CENTRAL RAILWAY	NTPC/RITES PROJECT AT KHARGONE	18.0 M	342
DFCCL MUMBAI	PALGHAR MUMBAI	30.0 M,18.0 M	600
BMC MUMBAI	CHARNI ROAD FOB, MUMBAI	20.0M, 21.5M	200
		TOTAL	3672



Major Projects Executed

YEAR - 2019

CLIENT	LOCATION	SPAN	QTY (MT)
SOUTH CENTRAL RAILWAYS	AKOLA	24.4 M	47
SOUTHERN RAILWAYS	KERALA	40.0 M	175
CENTRAL RAILWAY	KHARGONE MP, AKALKOT	30.5M, 18.0M	995
CENTRAL RAILWAY	PEN, MUMBAI	47.6M, 36.0M	860
CENTRAL RAILWAY	WADKAL, ROB	47.6 M	860
CENTRAL RAILWAY	LC-23, INDAPUR, PUNE	18.0M, 30.0M	235
CENTRAL RAILWAY	KHARGONE, MP	18.3M	350
CENTRAL RAILWAY	AKKALKOT ROAD,SAVALGI, GULBARGA.	30.5 M	400
SOUTHERN RAILWAYS	ROB BETWEEN ALAPPUZHA AND THUBOLI STATIONS, KERALA	53.0 M	406
NHAI	MANTRALAYAM ROAD, RAICHUR, KARNATAKA.	21.6 M	90
NHAI	BOKARO DIST., DHANBAD, JHARKHAND.	18.0M, 30.0M 36.0M	1145
KONKAN RAILWAY	MANGALORE	36.0 M	200
	TOTAL		5673

Major Projects Executed

YEAR - 2020			
CLIENT	LOCATION	SPAN	QTY (MT)
CENTRAL RAILWAY	KARALPHATA LHS, JNPT PROJECT, MUMBAI	25.0M, 27.0M 43.0M, 54.5M	1700
MMRDA	TALOJA, NAVI MUMBAI, MAHARASTRA.	58.70 M	660
NHAI	LOOP 2&3, MUMBAI.		108
DFCCIL	VALSAD, GUJARAT	60.0 M	365
NHAI	BOKARO DIST., DHANBAD, JHARKHAND.	60.0 M	730
MSRDC MUMBAI	PATRIPOOL, KALYAN, MUMBAI	76.59 M	692
MSRDC MUMBAI	PATRIPOOL, KALYAN, MUMBAI	33.0 M	150
MAHA METRO PUNE	MAHA METRO, PUNE	45.0 M	500
MAHA METRO PUNE	MAHA METRO, PUNE	50.0 M	595
CENTRAL RAILWAYS	KARALPHATA RHS, JNPT PROJECT, MUMBAI	25.0M, 27.0M 43.0M, 54.5M	1700
CENTRAL RAILWAYS	LATUR, MAHARASTRA	36.0 M	175
DMRC – MUMBAI METRO	MUMBAI METRO CORRIDOR	15.0 M, 18.0 M 36.0 M	135
		TOTAL	7510



Major Projects Executed

YEAR - 2021			
CLIENT	LOCATION	SPAN	QTY (MT)
NHAI	GAVANPHATA	24.3M, 25.0M 30.0M	1190
DMRC – MUMBAI METRO	MUMBAI METRO CORRIDOR		2961
MAHA METRO PUNE	MAHA METRO, PUNE	79.0M	590
MAHA METRO PUNE	MAHA METRO, PUNE	28.0M	93
MAHA METRO PUNE	MAHA METRO, PUNE	28.0M & 31.0M	727
MAHA METRO PUNE	MAHA METRO, PUNE	28.0M & 31.0M	705
CENTRAL RAILWAY	NEAR JASAI VILLAGE IN URAN RAILWAY	30.5M	192
NHIDCL	ARUNACHAL PRADESH	44.4M	511
MSRDC	WESTERN EXPRESS HIGHWAY, MUMBAI	24.20	54
		TOTAL	7023

Major Projects Executed

YEAR – 2021

CLIENT	LOCATION	SPAN	QTY (MT)
EAST COAST RAILWAYS	DAMANJODI, KORAPUT DISTRICT, ODISHA.	18.3M, 30.5M	1195
MMRDA	SCLR, MUMBAI METRO	30.0M, 20.35M 24.638	235
MUMBAI TRANS HARBOUR LINK	L&T MTHL PROJECT MUMBAI.	35.7M TO 60.0M	5000
CIDCO NEW MUMBAI	DRONAGIRI	39.45M, 57.45M	1070
SOUTHCENTRAL RAILWAY	BIDAR	36.0M	330
MAHA METRO PUNE	MAHA METRO, PUNE	90.0M	680
SOUTH CENTRAL RAILWAY	BETWEEN GAJWEL AND DUDEDEA STATIONS.	24.0	93
SOUTH CENTRAL RAILWAY	MUDKHED - MANMAD SECTION	42.2M	270
SOUTH WESTERN RAILWAY	BETWEEN SHIMOGA & KUMSI STATIONS	36.0M	250
NHAI	NAVAPUR DHULE MAHARASHTRA	24.0, & 36.0	2264
		TOTAL	11387
		GRAND TOTAL	18,410

Major Projects Executed

YEAR – 2022

CLIENT	LOCATION	SPAN	QTY (MT)
MUMBAI TRANS HARBOUR LINK	L&T MTHL PROJECT MUMBAI	52.0 M TO 60.0M	4025
NE FRONTIER RAILWAY	RAIGANJ	51.2M, 36.0M	2020
MRIDCL	SOUTH-EAST CENTRAL RAILWAY.	56.0M, 74.0M & 24.0M	1720
MMRDA	SCLR FLYOVER, HANUMAN MANDIR	60.0M	165
SOUTH CENTRAL RAILWAY	BETWEEN GAJWEL AND DUDEDEA STATIONS LC-102.	24.0	88
MMRDA	CHHEDA NAGAR	14.0M TO 40.0M	845
NHAI	NAVAPUR DHULE MAHARASHTREA	24.0, & 36.0	1018
NHAI	JASAI	35.0	417
MINISTRY OF ROAD TRANSPORT AND HIGHWAYS	PEN-KHOPOLI ROAD, RAIGAD	45.0M	450
MCGM	PINAKEE ENGINEERS / RK MADHANI - LOWER PAREL, MUMBAI	30.0M	1500
MCGM	JINDAL STAINLESS STEEL - WADALA, MUMBAI	40.0	100
		TOTAL	12348

Major Projects Executed

YEAR – 2023

CLIENT	CONTRACTOR	LOCATION	SPAN	QTY (MT)
TELANGANA STATE POWER GENERATION CORPORATION LIMITED	SRC COMPANY INFRA PVT LTD, HYDERABAD.	YADADRI, NALGONDA	30.5M & 45.7	450
NHAI	DRAIPL, AHMEDABAD	PURULIA	48.0M & 30.0M	1040
NHAI	SHANKAR NARAYANA CONSTRUCTIONS, BANGALORE	BR. NO-478	42.0M	610
		TOTAL		2100

Major Projects Executed

YEAR – 2024				
CLIENT	CONTRACTOR	LOCATION	SPAN	QTY (MT)
SOUTH CENTRAL RAILWAY	BEKEM/ROCKIERA	FOB AT DIFF. STATIONS, TELANGANA	MULTIPLE	1331
MCGM – MUMBAI	API BUILDCON, MUMBAI	PAREK NAGAR – STAINLESS STEEL	40.0M	350
RAMCO CEMENTS	K & R RAIL ENGINEERING LTD.	BRIDGE NO-21, BETWEEN SANJAMALA AND RAMCO	30.5M OWG	73
MCGM – MUMBAI	PINAKEE ENGINEERING, MUMBAI	SARVODAYA AARADHYA	12M & 11.8M	94
MCGM – MUMBAI	RK MADHANI, MUMBAI	IRANIWADI ROB	19.0M	140
SOUTHERN RAILWAYS	V.K.FORTUNEBUILDCON LLP	LC-172A & LC-174B, KERALA	36.0M & 30.0M	341
BEKEM	BEKEM	LAUNCHING GIRDER	144.0M	832
L&T / GREENKO	BEKEM	GANDHI SAGAR POWER HOUSE		563
BEKEM	BEKEM	MEENAKSHI (ABUTMENT & INTERMEDIATE)	-	135
		TOTAL		3,859

Major Projects Executed

YEAR – 2025

CLIENT	CONTRACTOR	LOCATION	SPAN	QTY (MT)
WESTERN RAILWAY	MBPL – PGIPL (JV),	BRIDGE NO. 418 , BETWEEN NIMACH - RATLAM	30.5mM OWG	73
MCGM – MUMBAI	RK MADHANI, MUMBAI	MRUNALTAI FLYOVER, BORIVALLY – MS & STAINLESS STEEL 35-37 & 37-40, A39 PORTAL - MS A21-A22 - SS		1538
SOUTHCENTRAL RAILWAY	ASHOKA/ BHARATH VANIJYA/ PLACEBO	KARNATAKA	2X47.0M 2X36.0M	929
SOUTH CENTRAL RAILWAY	PRATHIMA INFRA	NEW BG LINE, SIRICILLA TO SIDDIPET	2X48.0M SPAN BSG	498
SOUTHERN RAILWAY	VK FORTUNE BUILDCON HYDERABAD	PALAKKAD/KANJIKODE	17.0M & 37 M	260
L&T / GREENKO	BEKEM	GANDHI SAGAR POWER HOUSE		466
SOUTH CENTRAL RAILWAY	PRATHIMA INFRA	SIDDIPET TO SIRICILLA	2X36.0M CG 5X24.0M CG	892
		TOTAL		4,256

Major Projects Under Execution

CLIENT	CONTRACTOR	LOCATION	SPAN	QTY (MT)
MCGM – MUMBAI	SPECO INFRA	KARIYAPPA FLYOVER-CABLE STAY BRIDGE – STAINLES STEEL	70.0M	1550
MCGM – MUMBAI	RSP-JV, MUMBAI	NEHRU PLANITORIUM, MUMBAI – STAINLESS STEEL	MULTIPLE	5400
MCGM – MUMBAI	RK MADHANI, MUMBAI	MRUNALTAI FLYOVER, BORIVALLY – MS & STAINLESS STEEL	18.0M CG	112
L&T / GREENKO	BEKEM	GANDHI SAGAR POWER HOUSE		1595
PUNE MUNICIPAL CORPORATION	RBM CONSTRUCTION ENGINEERING (I) PRIVATE LIMITED	GHORPADI ROB OPEN WEB, PUNE	50.0M	300
SOUTH CENTRAL RAILWAY	TRENZET INFRA PVT. LTD.	LC NO.319	54.0M BSG 36.0M BSG	730
BRIHAN MUMBAI MUNICIPAL CORPORATION	HELLA INFRA MARKET LIMITED	PANVEL, CHITA CAMP - STAINLESS STEEL	MULTIPLE	4005
M E INFRA	M E INFRA	SOMMAIYA NALLA (A1 - A2)	16.32M CG	163
HIGHWAYS DEPARTMENT, CHENNAI CITY ROAD DIVISION	J KUMAR INFRAPROJECTS LTD.	TEYNAMPET TO SAIDAPET	MULTIPLE	5,000
		TOTAL		18,855

Projects Executed in PEB (Pre Engineered Building)

CLIENT	LOCATION	QTY (MT)
YEAR - 2014		
WAREHOUSE	PEB, ANDHRA PRADESH	300
YEAR - 2015		
ROXY FLOOR MILL	HYDERABAD	250
JBF, PIPE RACK STRUCTURE	MANGLORE, KARNATAKA	1200
YEAR - 2016		
JBF, BAGGING SHED	MANGLORE, KARNATAKA	400
SEATING WORLD WARE HOUSE	HYDERABAD	49
JBF PETROCHEMICALS,PTA WARE HOUSE	MANGLORE, KARNATAKA	650
MAHINDRA AND MAHINDRA WARE HOUSE	ZAHIRABAD	197
ROXY FLOOR MILLS	HYDERABAD	235
	TOTAL	3281

Projects Executed in PEB (Pre Engineered Building)

CLIENT	LOCATION	QTY (MT)
YEAR - 2017		
DHANLAXMI PACKAGING INDUSTRY P LTD	SHADNAGAR	980
M/S CHARMINAR FOODS	PATANCHERU HYDERABAD	650
MAHAVIR AUOTO SKODA/MERCEDEZE SHOW ROOM	VIJAYAWADA	100
YEAR - 2019		
JWALA GUTTA BADMINTON ACADEMY	HYDERABAD	198
DSL INFRA – D-MART	ISNAPUR, HYDERABAD.	1180
NETWORK CARRYING COMPANY	HYDERABAD	206
PMR WAREHOUSING	HYDERABAD-VRL LOGISTICS	1200
	TOTAL	4514
	GRAND TOTAL	7795



40.0M SPAN OPEN WEB GIRDER, KERALA

A Group Company of BEKEM



76.7M OPEN WEB GIRDER – PATRIPOOL KALYAN, MUMBAI

A Group Company of BEKEM



60.0M BOW STRING GIRDER – JHARKHAND



48.10M CLEAR SPAN BOW STRING GIRDER – RAIGANJ, WEST BENGAL

A Group Company of BEKEM



36.0MX3 COMPOSITE GIRDER – VELLORE



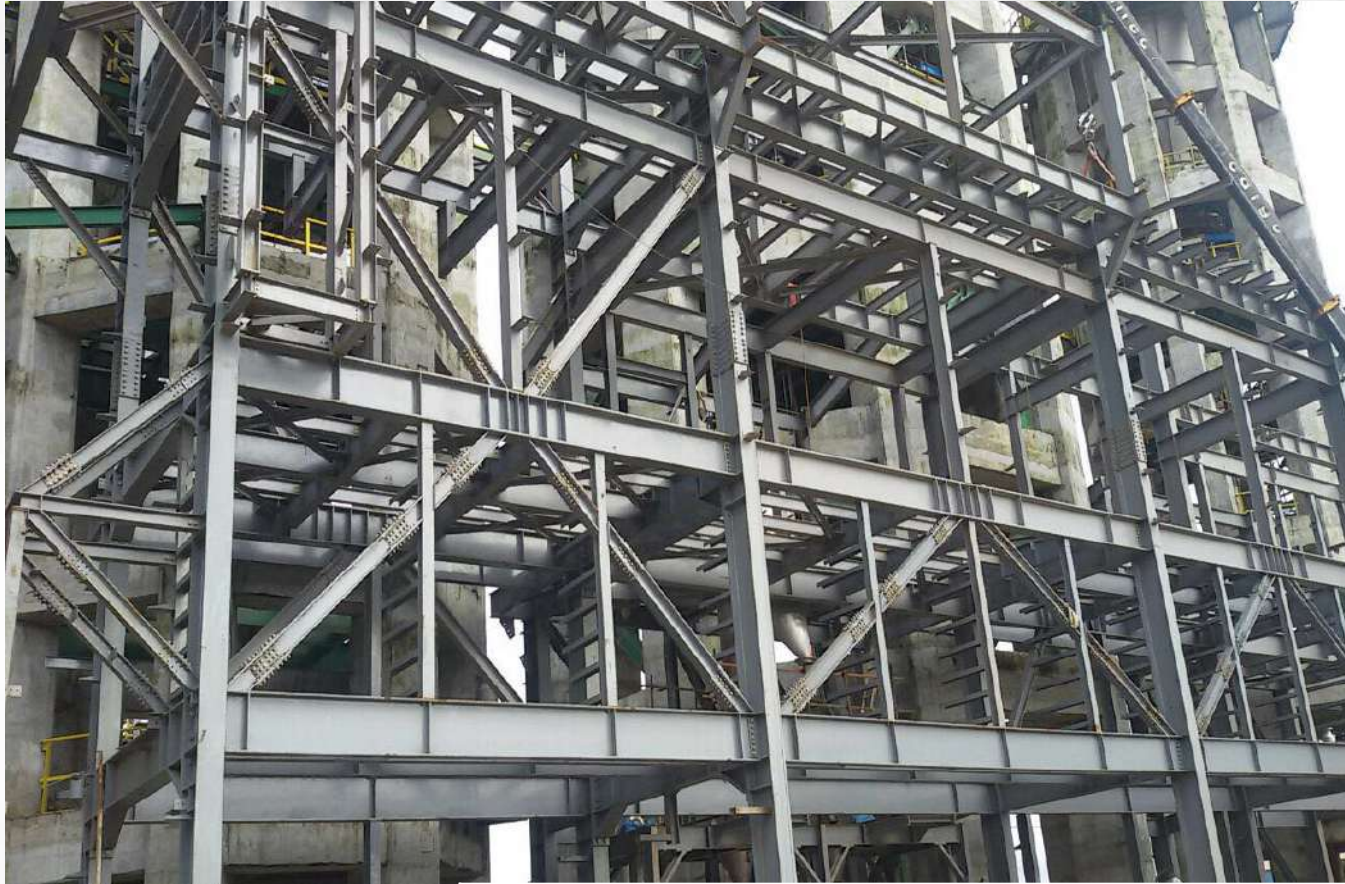
36.0M COMPOSITE GIRDER – ATTIPATTU



TRACK GIRDER – NIDADAVOLU

TRACK GIRDER – AKKALKOT

A Group Company of BEKEM



JBF Petro Chemicals, Mangalore
Bagging House Structure & Pipe Rack Structure Executed 4000 MT

A Group Company of BEKEM



DSL INFRA - D-MART - HYDERABAD



INCH BY INCH - VIJAYAWADA



JWALA GUTTA BADMINTON ACADEMY - HYDERABAD

PMR WAREHOUSING – VRL LOGISTICS - HYDERBAD

A Group Company of BEKEM

RDSO CERTIFICATE

टेलीफोन / Tele: DOT-2465705(O) 2452426(Res.)
Rly.-42122(O) 43122(Res.)
फैक्स / Fax: 91-0522-2465705
E-mail: dsb2rdso@gmail.com



भारत सरकार-रेल मंत्रालय
अनुसंधान अभिकल्प और मानक संगठन
कमरा नं०-223, एनेक्सी-बिल्डिंग,
मानकनगर, लखनऊ - 226011
Room No. 221, Annex-II Building,
Research Design & Standards Organisation
(Government of India-Ministry of Railways)
Manak Nagar, Lucknow- 226011.

No: CBS/G/Reg/Global Steel

Date: 26.02.2024

M/s. Global Steel Structures Private Limited
Survey No. 12, Kuchawaram, Toopran Mandal,
Distt-Medak, Telangana-502336

Sub: Continuation in the approved list of RDSO for fabrication of Open Web, Composite Girder and Other Steel Plate Girder Part A with work address at Survey No. 12, Kuchawram, Toopran Mandal, Distt-Medak, Telangana-502336

1. Based on Quality Audit of the infrastructure, T&P and other facilities installed at your work address at Survey No. 12, Kuchawram, Toopran Mandal, Distt-Medak, Telangana-502336, your firm registration is hereby continued in the approved list of RDSO for fabrication of Open Web, Composite Girder and Other Steel Plate Girder Part A.
2. Any change in the address of your office or manufacturing units shall be brought to the notice of Director General/B&S, RDSO, Lucknow. You are liable to be dropped from the approved list if your product is found unsatisfactory at any stage of fabrication and inspection or on any other violation as mentioned in ISO documents.
3. This continuation in the approved list of RDSO will be valid for a period up to **30.04.2030**. Next quality audit shall be initiated as per RDSO ISO document No. QO-D-8.1-13.
4. The further continuation in the approved list of RDSO will be subject to Quality Audit which generally will be initiated after three years from the previous quality audit. However, if special condition warrants, Quality Audit may be conducted earlier also.
5. It is the responsibility of the firm to facilitate the RDSO Team for conducting Quality Audit as & when required.

Please acknowledge receipt of the letter.

Digitally Signed by Pradeep
Kumar
Date: 28-02-2024 15:22:02
Reason: Approved
For Director General/B&S

ISO CERTIFICATES



Certificate of Registration

This is to certify that

GLOBAL STEEL STRUCTURES PRIVATE LIMITED
 SY. NO. 12, NH-45, KUCHARAM VILLAGE, MANOHARABAD MANDAL,
 MEDAK DIST., TELANGANA STATE - 502336, INDIA

has been independently assessed by QRO
 and is compliant with the requirement of:

ISO 9001:2015

Quality Management System

For the following scope of activities:

**DESIGN, FABRICATION, ERECTION & COMMISSIONING OF HEAVY
 FABRICATION STRUCTURES, PRE-ENGINEERED BUILDINGS, COMPOSITE
 STEEL GIRDERS, RAILWAY BRIDGES AND CIVIL ENGINEERING WORKS.**

Date of Certification: 21st December 2023 2nd Surveillance Audit Due: 20th December 2025
 1st Surveillance Audit Due: 20th December 2024 Certificate Expiry: 20th December 2026

Certificate Number: 305023122151Q



Signature
 Head of Certification

Validity of this certificate is subject to annual surveillance audits to be done successfully on or before 365 days from date of the audit.
 (In case surveillance audit is not allowed to be conducted; this certificate shall be suspended / withdrawn).

The Validity of this certificate can be verified at www.qrocert.org

This certificate of registration remains the property of QRO Certification LLP, and shall be returned immediately upon request.

India Office : QRO Certification LLP

142, 1st Floor, Astar Enclave, Near Paschim Vihar West Metro Station, Delhi-110063, (INDIA)
 Website : www.qrocert.org, E-mail : info@qrocert.org



Certificate of Registration

This is to certify that

GLOBAL STEEL STRUCTURES PRIVATE LIMITED
 SY. NO. 12, NH-45, KUCHARAM VILLAGE, MANOHARABAD MANDAL,
 MEDAK DIST., TELANGANA STATE - 502336, INDIA

has been independently assessed by QRO
 and is compliant with the requirement of:

ISO 14001:2015

Environmental Management System

For the following scope of activities:

**DESIGN, FABRICATION, ERECTION & COMMISSIONING OF HEAVY
 FABRICATION STRUCTURES, PRE-ENGINEERED BUILDINGS, COMPOSITE
 STEEL GIRDERS, RAILWAY BRIDGES AND CIVIL ENGINEERING WORKS.**

Date of Certification: 21st December 2023 2nd Surveillance Audit Due: 20th December 2025
 1st Surveillance Audit Due: 20th December 2024 Certificate Expiry: 20th December 2026

Certificate Number: 305023122153E



Signature
 Head of Certification

Validity of this certificate is subject to annual surveillance audits to be done successfully on or before 365 days from date of the audit.
 (In case surveillance audit is not allowed to be conducted; this certificate shall be suspended / withdrawn).

The Validity of this certificate can be verified at www.qrocert.org

This certificate of registration remains the property of QRO Certification LLP, and shall be returned immediately upon request.

India Office : QRO Certification LLP

142, 1st Floor, Astar Enclave, Near Paschim Vihar West Metro Station, Delhi-110063, (INDIA)
 Website : www.qrocert.org, E-mail : info@qrocert.org



Certificate of Registration

This is to certify that

GLOBAL STEEL STRUCTURES PRIVATE LIMITED
 SY. NO. 12, NH-45, KUCHARAM VILLAGE, MANOHARABAD MANDAL,
 MEDAK DIST., TELANGANA STATE - 502336, INDIA

has been independently assessed by QRO
 and is compliant with the requirement of:

ISO 45001:2018

Occupational Health and Safety Management System

For the following scope of activities:

**DESIGN, FABRICATION, ERECTION & COMMISSIONING OF HEAVY
 FABRICATION STRUCTURES, PRE-ENGINEERED BUILDINGS, COMPOSITE
 STEEL GIRDERS, RAILWAY BRIDGES AND CIVIL ENGINEERING WORKS.**

Date of Certification: 21st December 2023 2nd Surveillance Audit Due: 20th December 2025
 1st Surveillance Audit Due: 20th December 2024 Certificate Expiry: 20th December 2026

Certificate Number: 305023122152HS



Signature
 Head of Certification

Validity of this certificate is subject to annual surveillance audits to be done successfully on or before 365 days from date of the audit.
 (In case surveillance audit is not allowed to be conducted; this certificate shall be suspended / withdrawn).

The Validity of this certificate can be verified at www.qrocert.org

This certificate of registration remains the property of QRO Certification LLP, and shall be returned immediately upon request.

India Office : QRO Certification LLP

142, 1st Floor, Astar Enclave, Near Paschim Vihar West Metro Station, Delhi-110063, (INDIA)
 Website : www.qrocert.org, E-mail : info@qrocert.org

APPRECIATION

मुंबई जेएनपीटी पोर्ट रोड कंपनी लिमिटेड
(भारतीय राष्ट्रीय राजमार्ग प्राधिकरण का संयुक्त उपक्रम)
(सड़क परिवहन एवं राजमार्ग मंत्रालय, भारत सरकार)
MUMBAI JNPT PORT ROAD COMPANY LIMITED
(A SPV of National Highways Authority of India)
(Ministry of Road, Transport & Highway, Govt. of India)
परियोजना कार्यान्वय इकाई, Project Implementation Unit
सदर नं. 63, एनएच 4 बी "डी" पॉइंट, चिंचपाडा-कलंबोली बायपास रोड, पनवेल - 410 206.
Survey No. 63 "D" Point on NH-4B, Chinchpada - Kalamboli Bypass Road, Panvel - 410 206
E-Mail / E-mail : projnpt@nha.org / bjnpt@nha.org / वेबसाईट / Website : www.nha.gov.in
CIN No. : U74899 DL 2000 PLC 109516

एन.एच.ए.आय./पी.आय.यु./पनवेल/ एम.जे.पि.आर.सी.एल./२०२०/२०८ तारीख: १५.०५.२०२०

प्रति,
M/S Global Steel Company,
Survey No.12, Near Bus Stand,
Kucharam Village, Toopran Mandal,
Medchal, Medak District - 502 334,
A.P., India.

Sub: 6/8 laning of JNPT connectivity roads NH-348, 348A and NH-548 and four laning of Panvel Indapur Section of NH-66 from Km 0 to 84: Fabrication of composite steel structures for ROB: **Letter of Appreciation reg..**

Sir,
The works of 6/8 laning of JNPT connectivity roads (NH-348, 548 and 348A) and Four laning of Panvel Indapur section of NH-66 are in progress under this PIU. These projects of National importance involves about 65% of complex structures inclusive of 11 no of ROB's and the quantum of the Composite Steel girders is about 7500 MTs. M/S Global Steel Company has been assigned the work of fabrication and assembling of steel superstructures of all the ROB's by the EPC agencies and the concessionaire.

It would be apt to mention here that despite involvement of huge quantum of steel fabrication work, our executing agencies could streamline and plan all these activities simultaneously at all the ROB sites and could achieve the deadlines only because the timely fabrication and assembling work done by M/S Global Steel Company.

It is further to mention that during the pandemic situation Nation is facing since mid of March 20, due to the dedicated and sincere efforts made by M/S Global Steel Team in fabrication, transportation and assembling of steel structures, the fabricated steel reached at erection site as per the schedule. The EPC agency could therefore erect the Karalphata ROB (LHS) superstructures with 70° skew precisely over the openings.

भवदीय,

(प्रशांत जे. फेगडे)
महाप्रबंधक (तकनीकी) एवं परियोजना निर्देशक
प.का.ई. पनवेल

मुख्य कार्यालय : प्लॉट नं. जी-5 एवं 6, सेक्टर-10, द्वारका, नई दिल्ली - 110 075. दूरभाष / फोन : 011-25074100/25074200 फैक्स : 011-25093507
Corporate Off No. G-5 & 6, Sector - 10, Dwarka, New Delhi - 110 075. Tel./Fax: 011-25074100/25074200 Fax : 011-25093507

MSRDC/02/JMD(ENGG-1)/BKSP/Six-lanning/PatriPool/F.No.302/2797
Date : 12.05.2021.



To,
M/s. Global Steel Company,
Survey No.12, Near Bus stand,
Kucharam Village, Toopran Mandal,
Medchal, Medak District - 502 334,
Telangana, India.

Sub: **Construction of ROB at Km 51/16-17 On TNA-KYN Section Near Old Patripool ROB. Letter of Appreciation.**

The work of Main Line Span A2-P1 (Span 76.67m Open Web Girder & 33.0m Semi Through Girder), CSMT-KYN Section, Km 51/16-17. This project of Public/National importance involves complex structures and the quantum of the Open Web Girder & Semi Through Girder is about 850 Mts. M/s. Global Steel Company has been assigned the work of fabrication and assembling of steel superstructures of all the ROB's by the EPC agencies and the concessionaire.

It would be apt to mention here that, despite involvement of huge quantum of steel fabrication work, our executing agencies could streamline and plan all these activities simultaneously at the ROB site and could achieve the deadlines only because the timely fabrication and assembling work done by M/s. Global Steel Company.

It is further to mention that, during the pandemic situation Nation is facing since mid of March 20, due to the dedicated and sincere efforts made by M/s. Global Steel Team in fabrication, transportation and assembling of steel structures, the fabricated steel reached at erection site as per the schedule. The EPC agency could therefore erect the Patripool ROB precisely over the openings.

(S.V. Sankar)
Chief Engineer
MSRDC, Mumbai

मुख्य कार्यालय : सी. व्ही. रेलवे स्टेशन रोड, दिल्ली नगरपालिका, न. नं. १०, प्लॉट नं. ५, ६ - ११० ०७५.
दूरभाष : ०११-२५०७४१००/२५०७४२०० फैक्स : ०११-२५०९३५०७
द्वारका कार्यालय : सी. व्ही. रेलवे स्टेशन रोड, दिल्ली नगरपालिका, प्लॉट नं. ५, ६ - ११० ०७५.
दूरभाष : ०११-२५०७४१००/२५०७४२०० फैक्स : ०११-२५०९३५०७

OUR VALUED CLIENTS



A Group Company of BEKEM

GSC GROWTH



GSC is Growing with the help of a clear business strategy, Market research, Feasibility Studies, Delivering greater customer satisfaction that addresses the goals & challenges.

GSC has been witnessing a steady growth with each passing year.

Regular enquiries for design and quotation keep our in-house design team on their toes.

With a dedicated team of professionals GSC is confident to reach heights in Steel Business in India.



Office / Factory

Survey No. 12, Near Bus Stand, Kucharam Village, Manoharabad Mandal, Medak District - 502 336. Telangana State.

Tel: 9642825000/8712686668



Confederation of Indian Industry



A Group Company of BEKEM

THANK YOU